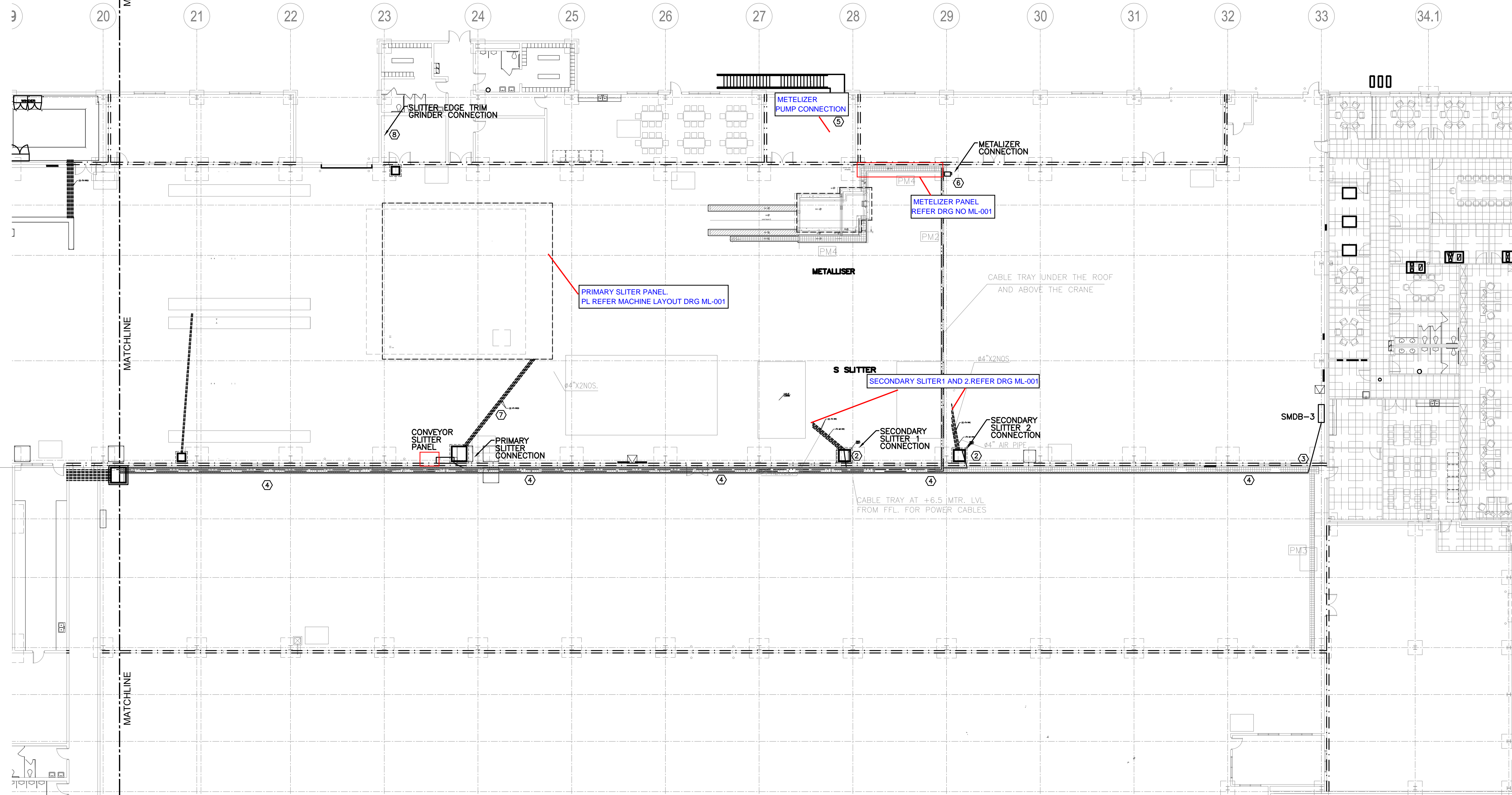


SHEET A ← → SHEET B



All the cable trays of 300 mm and above shall be ALUMINIUM Ladder Type with the web height of 85 mm, thickness of sheet 2mm, complete with jointing accessories and supports etc. Cable trays of size 100 mm and 200 mm shall be of Basket Type or Perforated Type, complete with accessories and supports. There must be equidistant latching of each tray joint. Consider the cover tray on all the exposed area and trays installed with machines. Make Referred.

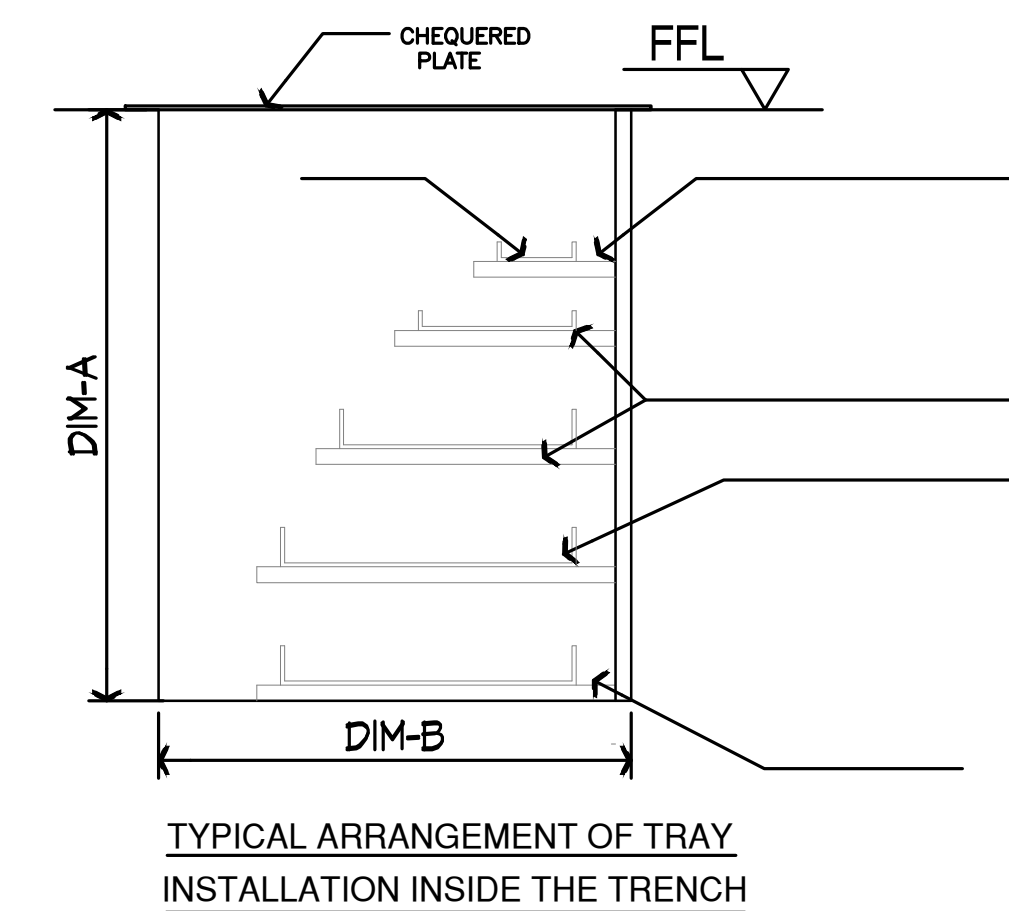
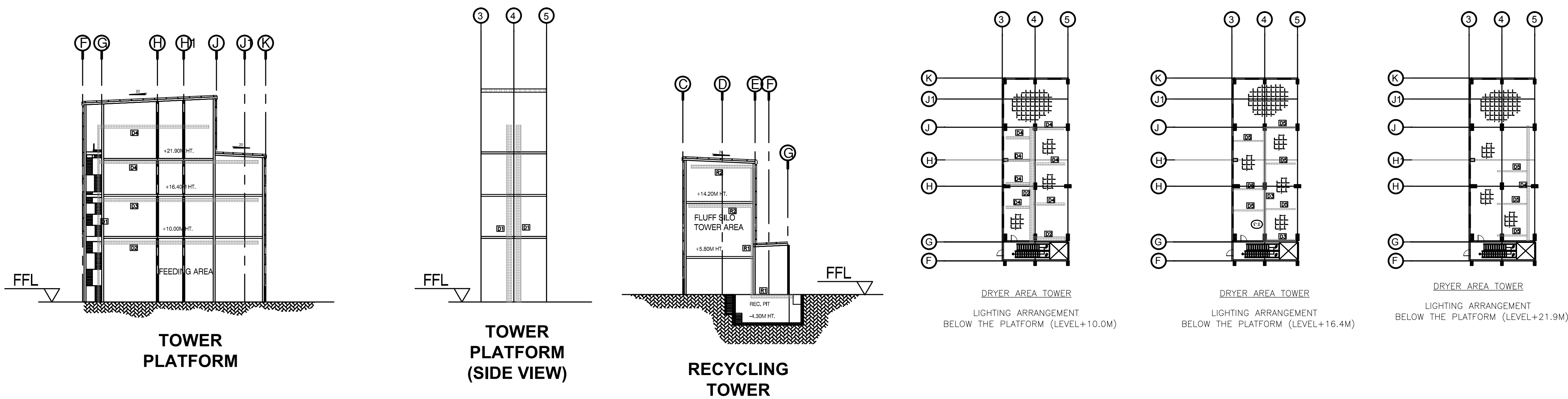
AREA	Area Wire SYMBOL	Length of cable Trays in MTR (Of Different widths)					
		100 mm	12"	12"	18"	24"	30"
EXTRUSION AREA	E1	10					
	E2		3	3		20	
	E3		12				
	E4	11				22	
	E5	9				9	9
	E6	4		4		4	
	E7	2				2	2
MDO AREA	M1	11				22	
	M2		47				47
	M3		36				
	M4		45	45		47	
TDO AREA	T1		23				46
	T2				106		106
	T3	30					
	T4			25	25		
	T5		12	25	12	12	
	T6				10	10	30
PRS AREA	P1	5	10				
	P2						
WINDER AREA	W1		8	8	8		
	W2		18				70
RECYCLING AREA	R1		35			27	35
	R2		35	35			
SUBSTATION AREA	S1				240	240	730
	S2						185
	S3			60			60
	D1				30	60	55
	D2				30	30	
	D3		30		30	30	
DRYER AREA	D4				72		
	D5		45				
	PM1		117			105	
	PM2		60				
PACKING & METALLIZER AREA	PM3		30				
	PM4		30	26			
	SL1		418				
	SL2		600	250	200	160	150
SILOS AREA				160	150	60	
Total Tray (Meter)		1000	850	551	815	764	1163
% of Cable Tray that Require a Cover		50%	50%	50%	20%	10%	10%

CABLE TRAY SIZE AND LENGTH
SCALE: NS

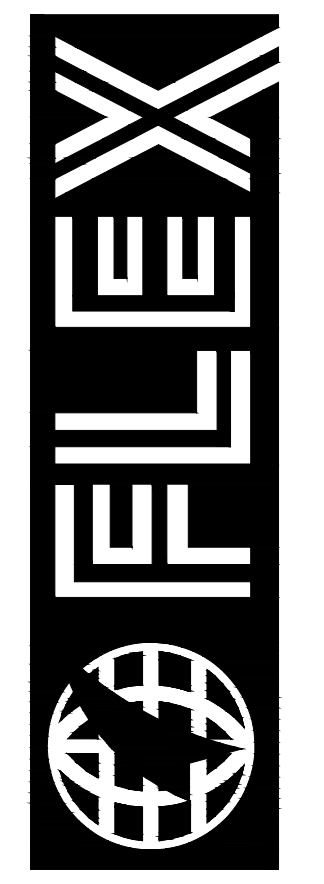
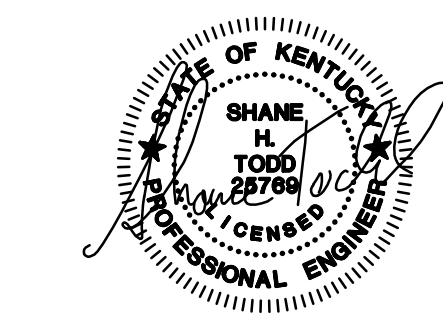
CABLE TRAY LAYOUT B
SCALE: 1"=1/16"

SHEET NOTES:

- ROUTE CABLE THROUGH 2" CONDUIT AND OVERHEAD TO CONVEYOR SLITTER PANEL. SEE DETAIL A FOR CABLE TRAY TO CONDUIT CONNECTION.
- ROUTE CABLE THROUGH MANHOLE INTO 4" UNDERSLAB CONDUIT. SEE DETAIL A FOR CABLE TRAY TO CONDUIT CONNECTION.
- ROUTE CABLE THROUGH 2-3" CONDUITS OVERHEAD TO SMDB-3. SEE DETAIL A FOR CABLE TRAY TO CONDUIT CONNECTION.
- TRAY TO BE A MINIMUM OF 30" WIDTH TO ACCOMMODATE POWER CABLES. SEE DETAIL A FOR CABLE TRAY TO CONDUIT CONNECTION.
- METALLIZER PUMP CONNECTION. ROUTE CONDUIT OVERHEAD FROM TRAY.
- PROVIDED MINIMUM 1250A DISCONNECT FOR METALLIZER PANEL.
- TERMINATE AT DISCONNECT. PULL COPPER CONDUCTORS FROM DISCONNECT THROUGH UNDERSLAB CONDUIT TO SLITTER MACHINE. COORDINATE CONNECTION WITH OWNER.
- ROUTE 2.5" CONDUIT OVERHEAD TO EDGE TRIM GRINDER. CONNECT TO TRAY WITH DETAIL B ON SHEET E-011A.



TYPICAL ARRANGEMENT OF TRAY INSTALLATION INSIDE THE TRENCH



FLEXFILMS, U.S.A., LLC
1221 NORTH BLACK BRANCH ROAD
ELIZABETHTOWN, KENTUCKY 42702
PROJECT L-12 BOPET U.S.A.

DATE	REVISION	BY

PROJECT NO. 8529-02
DESIGNED BY LIE
DRAWN BY LIE
CHECKED BY SHT
REVIEWED BY SHT
DATE JULY 2011
SCALE AS NOTED

nse OF KENTUCKY, INC.
Engineers
Architects
Planners
624 Wellington Way
Lexington, KY 40503
Phone: (859)223-5854
Fax: (859)223-2807
www.nseinc.com

DRAWING NO.
**UFL-L12
E-011B**